

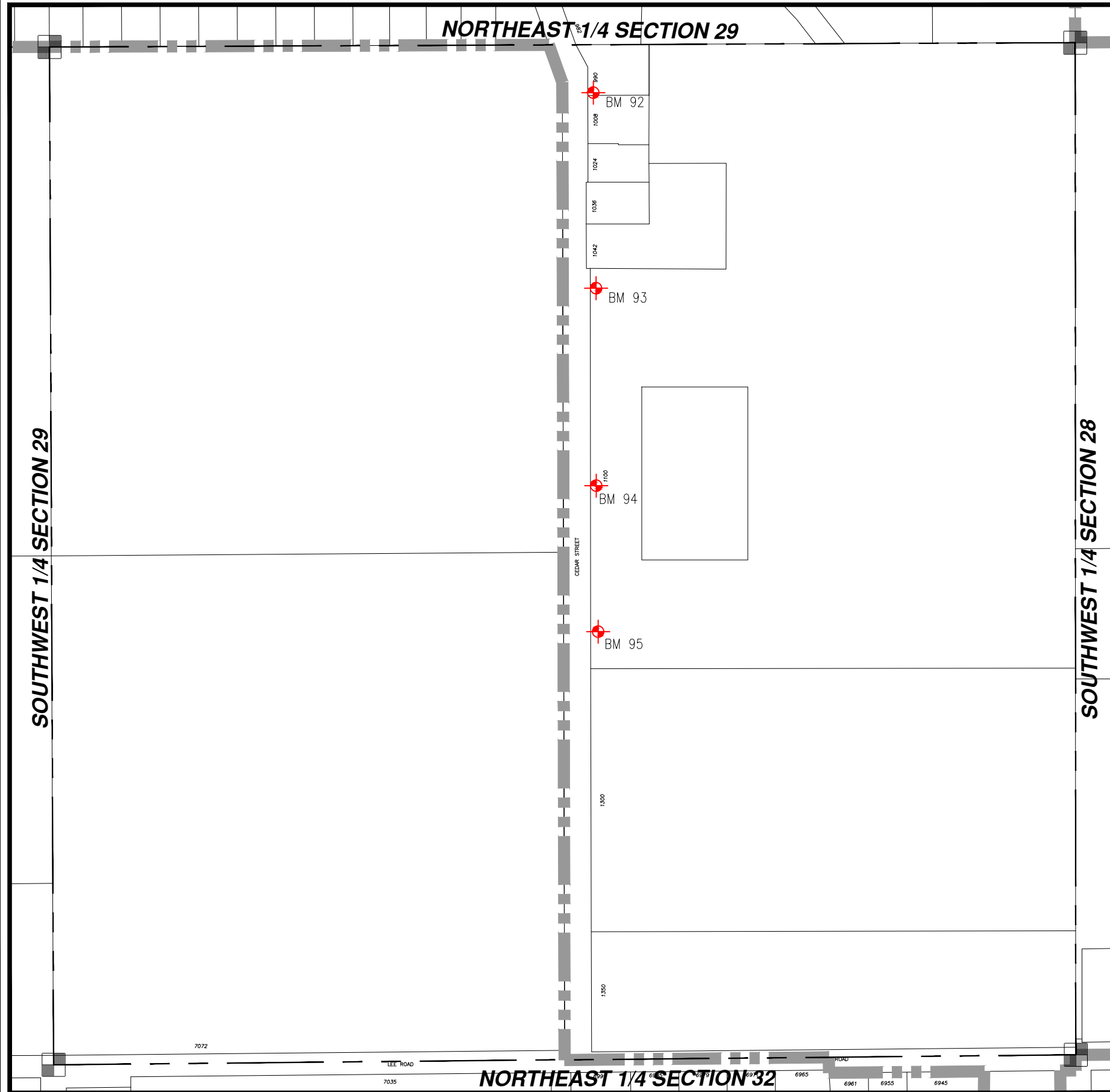


WASHINGTON COUNTY, T10 R18

SE 1/4 SECT 29

SE 29

= Hyd. With NO Benchmark Info.
 = Existing Benchmark
 = Benchmark in Adjacent Section
 Users Should **VERIFY** all Benchmarks Information before use.



BM #	ELEV	DESCRIPTIONS
92	1033.92'	FIRE HYDRANT, NW. BOLT, E. SIDE CEDAR STREET @ HSE. #990
93	1034.79'	FIRE HYDRANT, NE. BOLT W/TAG, E. SIDE OF CEDAR STREET @ HSE.# 1042
94	1026.95'	FIRE HYDRANT, NE. BOLT W/TAG, E. SIDE OF CEDAR STREET @ CENTER OF CENTRAL MIDDLE SCHOOL
95	1031.92'	FIRE HYDRANT, NE. BOLT W/TAG, E. SIDE CEDAR STREET @ POLE #012159