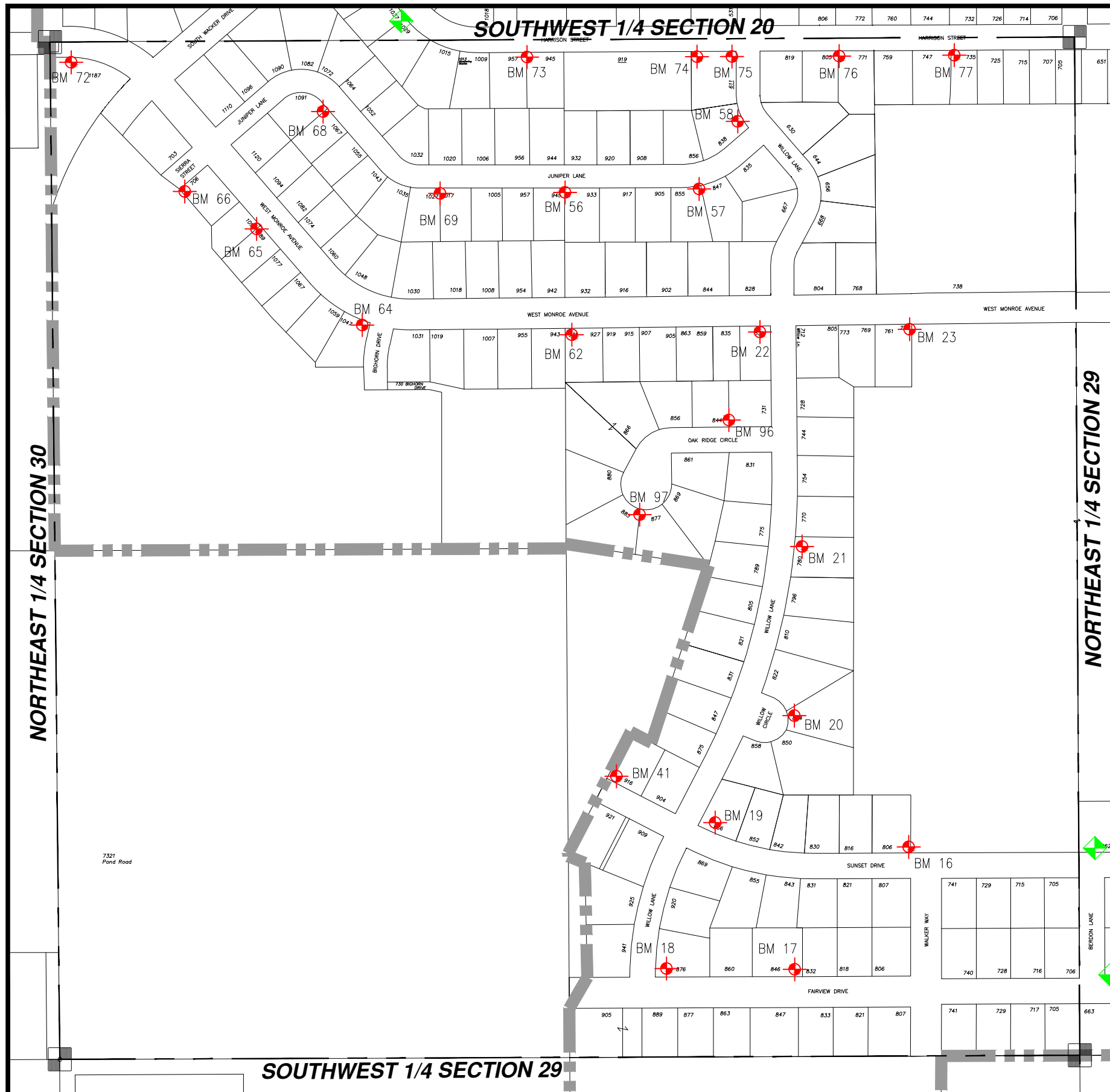




WASHINGTON COUNTY, T10 R18 NW 1/4 SECT 29

NW 29

= Hyd. With NO Benchmark Info.
 = Existing Benchmark
 = Benchmark in Adjacent Section
Users Should VERIFY all Benchmarks Information before use.



BM #	ELEV	DESCRIPTIONS
16	1037.51'	Fire Hydrant, (top bolt) North side of Sunset at intersection of Wacker Drive
17	1039.00'	Fire Hydrant, (top bolt) North side of Fairview, between Wacker and Willow
18	1038.51'	Fire Hydrant, (top bolt) NE corner of Willow and Fairview
19	1041.97'	Fire Hydrant, (top bolt) NE corner of Sunset and Willow
20	1040.88'	Fire Hydrant, (East bolt) NE area of Willow Circle
21	1051.69'	Fire Hydrant, (top nut) East side of Willow at top of hill (1051.01 NE bolt)
22	1030.65'	Fire Hydrant, (top nut) SW corner of Willow and Monroe (1029.74 NE bolt)
23	1029.58'	Fire Hydrant, (top bolt) South side of Monroe, 300' E of Willow Lane
41	1040.58'	FIRE HYDRANT, TOP BOLT N. SIDE OF SUNSET AT END OF STREET, 200' +/- WEST OF WILLOW
56	1007.65'	FIRE HYDRANT, BOLT W/TAG, W/END JUNIPER, S/SIDE STREET, @ HOUSE #933
57	1002.37'	FIRE HYDRANT, BOLT W/TAG, S/SIDE JUNIPER @ HOUSE #855/#847
58	999.75'	FIRE HYDRANT, BOLT W/TAG, NW. CORNER JUNIPER LN. & WILLOW LN. @ HOUSE # 838
62	1037.80'	FIRE HYDRANT, SE BOLT W/TAG, S. SIDE OF W. MONROE AT #931
64	1016.50'	FIRE HYDRANT, SE BOLT W/TAG, SW COR. W. MONROE AND BIGHORN DR AT # 1043
65	1018.33'	FIRE HYDRANT, SE BOLT W/TAG, S. SIDE OF W. MONROE AT #1017
66	1025.22'	FIRE HYDRANT, SE BOLT W/TAG, S. SIDE OF JUNIPER, 100' S. OF W. MONROE
68	1005.54'	FIRE HYDRANT, SE BOLT W/TAG, NW. SIDE OF JUNIPER AT #1067
69	1014.23'	FIRE HYDRANT, SE BOLT W/TAG, S. SIDE OF JUNIPER AT #1027
72	1021.75'	FIRE HYDRANT, SW. BOLT W/TAG, S. SIDE OF W. MONROE AVENUE AT POND ROAD
73	993.32'	FIRE HYDRANT, SE. BOLT W/BURY TAG, S. SIDE OF HARRISON STREET E. OF HSE. #957
74	997.00'	FIRE HYDRANT, SE. BOLT W/TAG, S. SIDE OF HARRISON STREET E. OF #919 (STORM WATER POND AREA)
75	998.96'	FIRE HYDRANT, BOLT W/TAG, SW. COR. WILLOW LANE AND HARRISON STREET @ HSE. #611
76	1009.34'	FIRE HYDRANT, SE. BOLT W/BURY TAG, BETWEEN HSE #771 & #805 HARRISON STREET
77	1017.70'	FIRE HYDRANT, SE. BOLT W/BURY TAG BETWEEN HSE #735 & #747 HARRISON STREET
96	1049.38'	FIRE HYDRANT, NE. BOLT W/TAG, N. SIDE OF OAK RIDGE CIRCLE @HSE. #844 - E. LOT LINE
97	1054.55'	FIRE HYDRANT, NE. BOLT, @ END OF OAK RIDGE CIRCLE BETWEEN HSE. #883 & #877