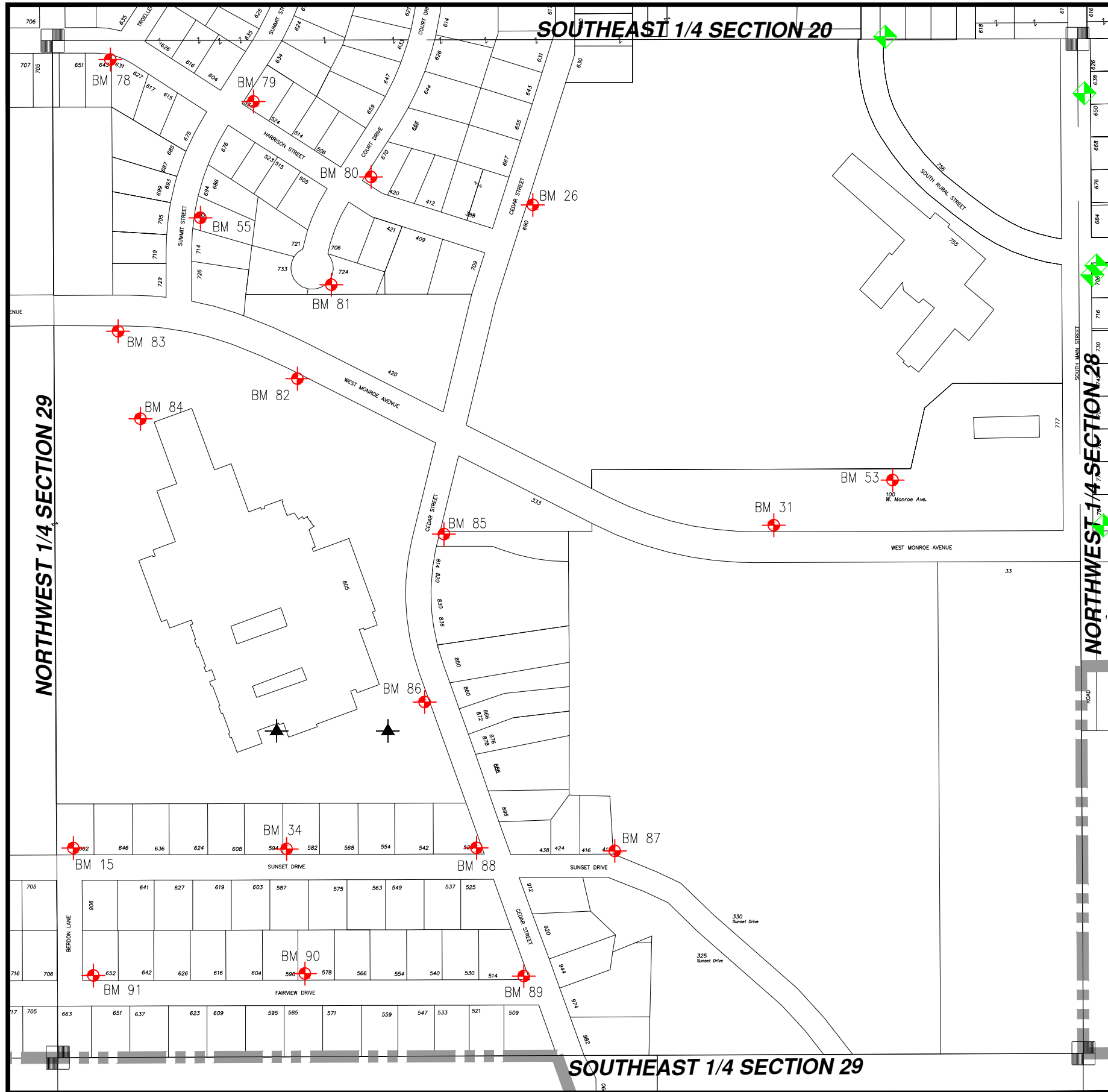




WASHINGTON COUNTY, T10 R18 NE 1/4 SECT 29

NE 29

= Hyd. With NO Benchmark Info.
 = Existing Benchmark
 = Benchmark in Adjacent Section
Users Should VERIFY all Benchmarks Information before use.



BM #	ELEV	DESCRIPTIONS
15	1033.52'	Fire Hydrant, (top West bolt) North side of Sunset at intersection with Berdon
26	1016.54'	Fire Hydrant, (North bolt) East side of Cedar S. at driveway to Gib Mahr Athletic Field
31	1007.41'	Fire Hydrant, top bolt, N side of E. Monroe Av., S of Veteran's Park basketball court
34	1023.54'	Fire Hydrant, (top west bolt) North side of Sunset midway between Cedar and Berdon
53	1006.45'	TOP OF FLAT AREA OF NW. BOLT-HOLDING FLANGE(CHISELED "+"), 0.5' BELOW VERY TOP OF 4" SPRINGLER HYDRANT(MINI), 5' MORE OR LESS WEST OF N/S DITCH, SE. OF WEST RINK(POND), 100' MORE OR LESS NORTH OF SIDEWALK
55	1012.81'	FIRE HYDRANT, TOP BOLT, EAST SIDE OF SUMMIT AT HOUSE #700
78	1005.73'	FIRE HYDRANT, CHS. "X", W. SIDE TOP FLANGE, HSE. #643 & #631 HARRISON STREET
79	1009.09'	FIRE HYDRANT, TOP BOLT, NE. COR. SUMMIT STREET AND HARRISON STREET
80	1010.95'	FIRE HYDRANT, E. BOLT, NE. COR. COURT DRIVE AND HARRISON STREET
81	1012.12'	FIRE HYDRANT, SE. BOLT W/TAG, SOUTH END COURT DRIVE, (SOUTH OF HARRISON STREET)
82	1016.16'	FIRE HYDRANT, TOP BOLT, S. SIDE W. MONROE AVENUE @ HIGH SCHOOL
83	1019.06'	FIRE HYDRANT, TOP BOLT, S. SIDE W. MONROE AVENUE 100' +/- W. OF SUMMIT STREET
84	1023.26'	FIRE HYDRANT, NE. BOLT @ ARROW, IN HIGH SCHOOL PARKING LOT ISLAND - 50' +/- N. OF NW. COR OF BLDG. AND E. OF TENNIS COURTS
85	1012.69'	FIRE HYDRANT, NW. BOLT W/TAG, E. SIDE CEDAR STREET, JUST N. OF HSE. #814
86	1016.27'	FIRE HYDRANT, TOP BOLT, N. SIDE OF THE S. DRIVE ENT. FOR HIGH SCHOOL, W. SIDE CEDAR STREET
87	1008.36'	FIRE HYDRANT, NW. BOLT, N. SIDE OF SUNSET DDRIVE @ DEAD END, E. OF HSE. #412
88	1017.38'	FIRE HYDRANT, N. BOLT @ ARROW, NW. COR. CEDAR STREET AND SUNSET DRIVE
89	1024.96'	FIRE HYDRANT, NE. BOLT (TOP), NW. COR. CEDAR STREET AND FAIRVIEW DRIVE
90	1028.04'	FIRE HYDRANT, E. BOLT, N. SIDE FAIRVIEW DRIVE @ HSE. # 578 & #590
91	1035.74'	FIRE HYDRANT, E. BOLT, NE. COR. FAIRVIEW DRIVE AND BERDON LANE