


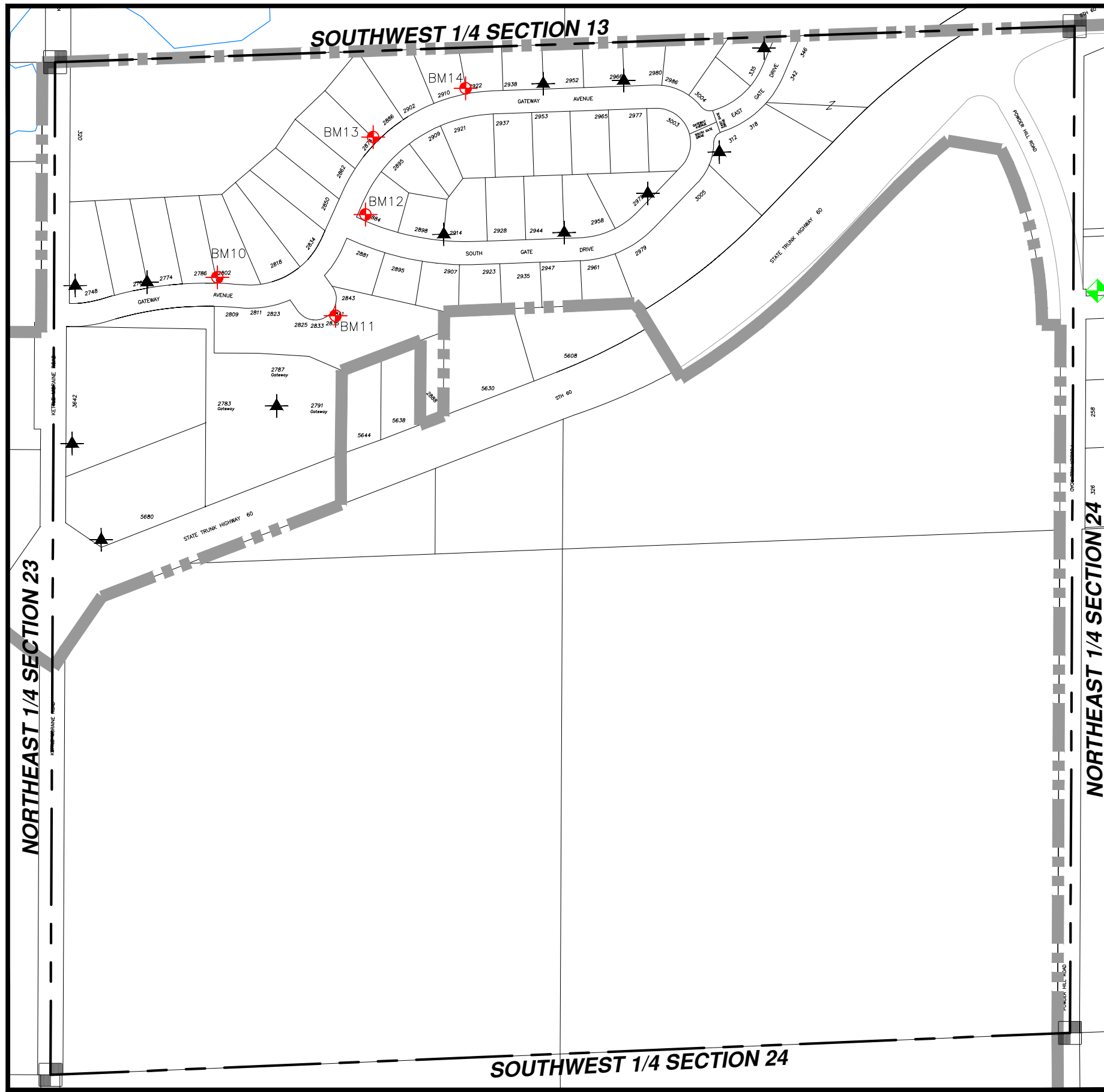




# WASHINGTON COUNTY, T10 R18 NW 1/4 SECT 24

# NW 24

 = Hyd. With NO Benchmark Info.  
 = Existing Benchmark  
 = Benchmark in Adjacent Section  
 Users Should **VERIFY** all Benchmarks Information before use.



BM #	ELEV	DESCRIPTIONS
10	1027.92	FH, NW BOLT AT PROPERTY LINES FOR LOTS 4/5 #'S 2786/2802
11	1030.55	FH, W. BOLT IN CUL-DE-SAC AT #2841, LOTS 42/43, ALSO SEE 51/46
12	1029.66	FH, EAST BOLT AT ARROW, AT GATEWAY AND SOUTHGATE
13	1025.39	FH, BOLT AT ARROW, AT LOTS 10/11, #'S 2874/2886
14	1023.25	FH, BOLT AT ARROW, AT LOTS 13/14, #'S 2910/2922