




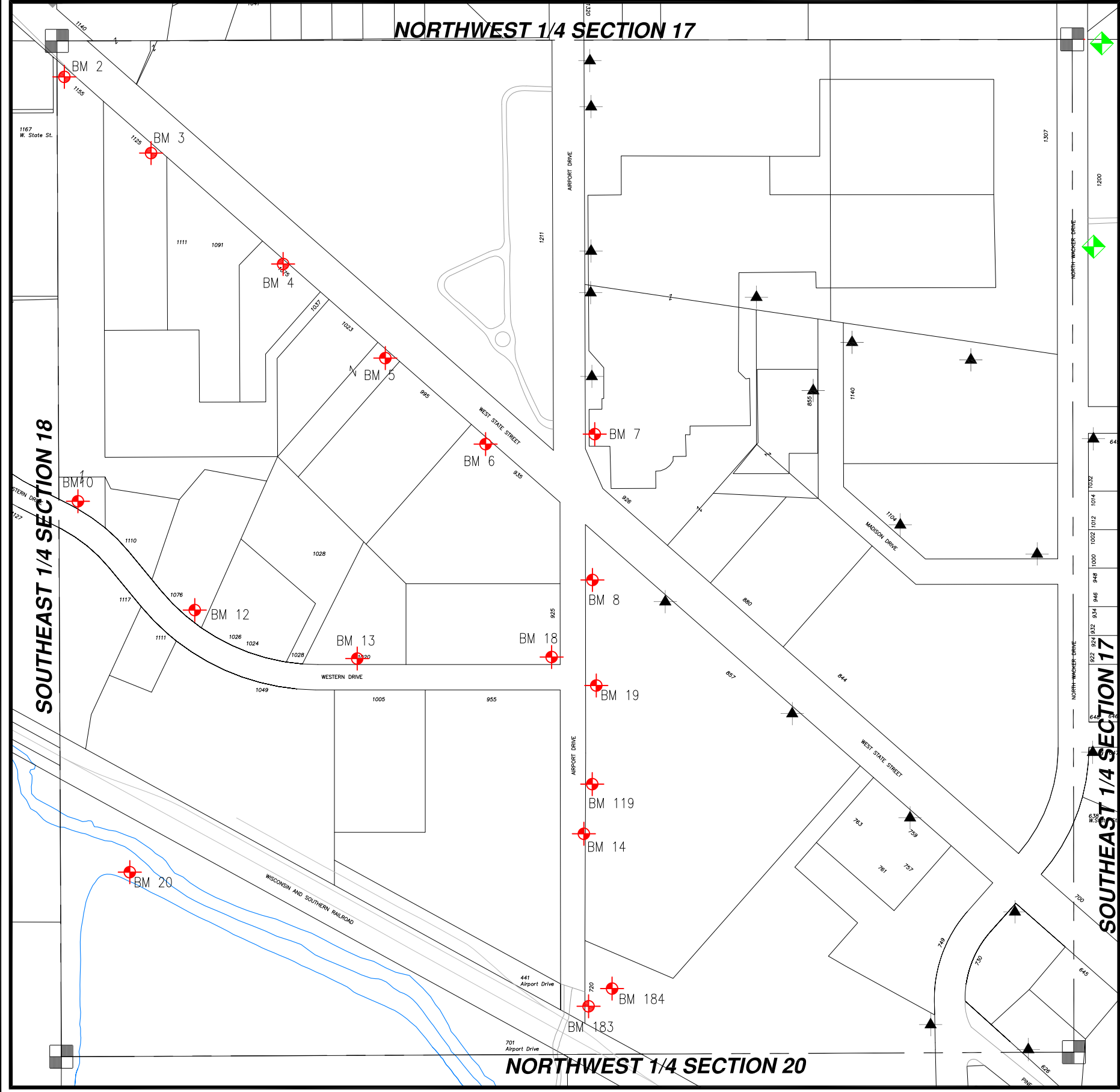


WASHINGTON COUNTY, T10 R18

SW 1/4 SECT 17

SW 17

 = Hyd. With NO Benchmark Info.
 = Existing Benchmark
 = Benchmark in Adjacent Section
Users Should VERIFY all Benchmarks Information before use.



BM #	ELEV	DESCRIPTIONS
2	991.89	FIRE HYDRANT (SW BOLT @ ARROW) S. SIDE OF W. STATE ST. AT HOUSE #1167 (Originally House #3923)
3	1010.29	FIRE HYDRANT (NW BOLT @ ARROW) S. SIDE OF W. STATE ST. BY P.P. #92-2293
4	1017.17	FIRE HYDRANT (SE BOLT @ ARROW) S. SIDE OF W. STATE ST. BY ALLAR UNLIMITED, 20' +/- E. OF P.P. #92-2291
5	1009.53	FIRE HYDRANT (N BOLT @ ARROW) S. SIDE OF W. STATE ST. BY MANTZ AUTOMATION, 20' +/- OF P.P. #92-2289
6	1000.77	FIRE HYDRANT (NW BOLT W/ TAG) S. SIDE OF W. STATE ST. JUST WEST OF THE "INNOVATION CENTER" BUILDING
7	998.45	FIRE HYDRANT (SW BOLT) NE CORNER OF WEST STATE STREET AND CTH "U"
8	989.98	UTILITY POLE #1946 HEAD OF LARGE NAIL WEST SIDE @ GROUND LEVEL
10	967.74	FIRE HYDRANT (NW BOLT) AT END OF WESTERN DRIVE
12	975.62	FIRE HYDRANT (NE BOLT W/TAG) IN FRONT OF BUILDING #1076
13	982.94	FIRE HYDRANT (NW BOLT) NORTH SIDE OF ROAD IN FRONT SECOND BUILDING WEST OF AIRPORT DRIVE. BUILDING NUMBER 1020
14	976.99	RAILROAD SPIKE IN UTILITY POLE #1942, EAST SIDE OF AIRPORT DRIVE
18	983.31	FIRE HYDRANT (NW BOLT W/TAG) (NW) CORNER OF WESTERN DRIVE AND AIRPORT DRIVE
19	982.77	FIRE HYDRANT (TOP BOLT) ON EAST SIDE OF AIRPORT DRIVE JUST SOUTH OF INTERSECTION OF AIRPORT AND WESTERN DRIVE
20	963.40	SPIKE IN POWER POLE #1157 NORTH SIDE (SEE CADASTRAL FOR LOCATION)
119	977.47	FIRE HYDRANT, NE BOLT W/TAG, EAST SIDE OF AIRPORT DR, 30' +/- S. OF UTIL. POLE # 1942
183	973.07'	FIRE HYDRANT, NE. BOLT W/TAG, E. SIDE AIRPORT DRIVE, @ S. END OF ROAD, 60' +/- S. OF MENASHA DRIVEWAY, 30' +/- N. OF RAILROAD TRACKS
184	973.48'	R/R SPIKE, W. FACE P.P. #1940, 25' +/- N. RAILROAD SPUR, E. SIDE AIRPORT DRIVE