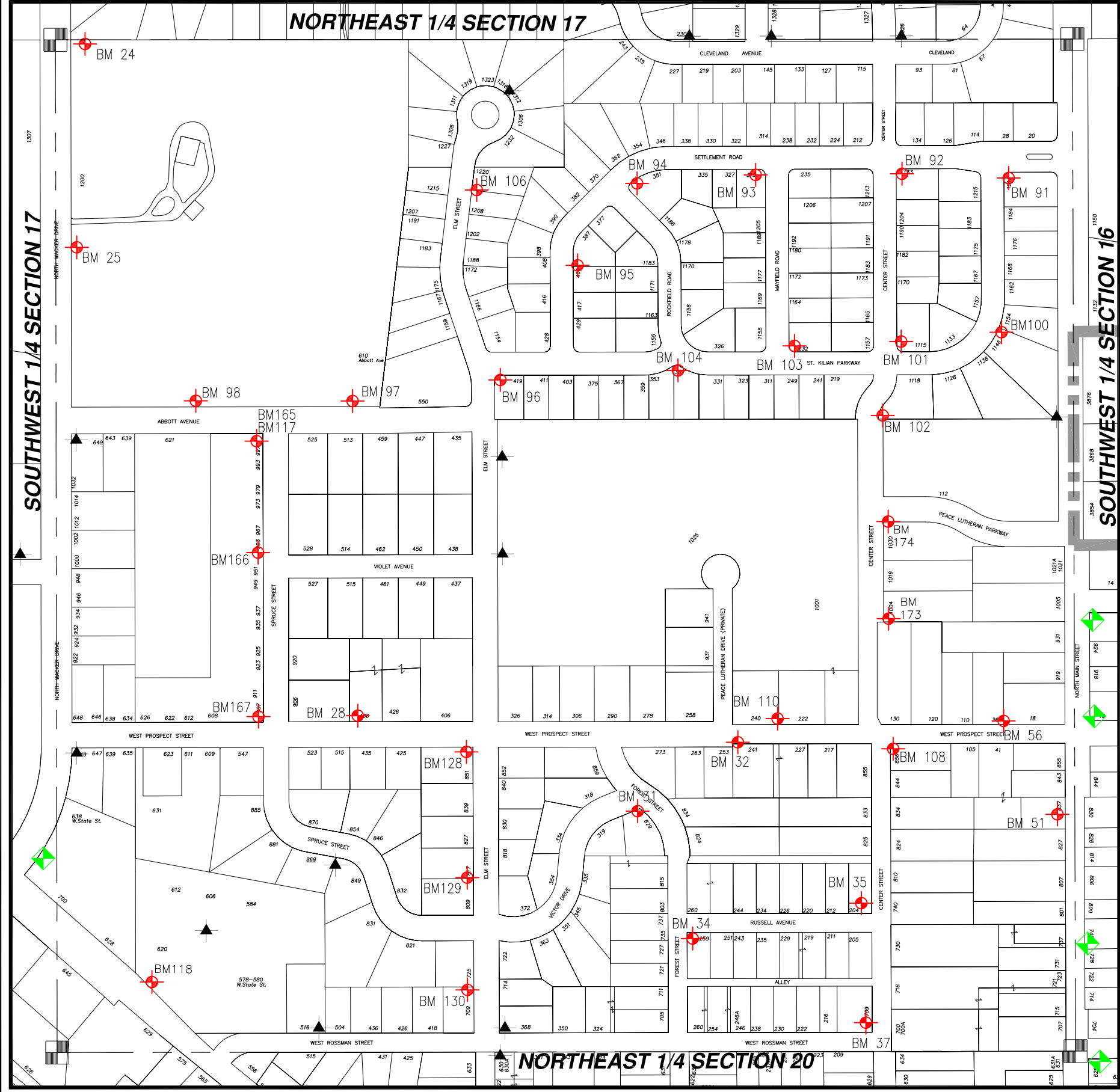


WASHINGTON COUNTY, T10 R18

SE 1/4 SECT 17

SE 17

= Hyd. With NO Benchmark Info.
 = Existing Benchmark
 = Benchmark in Adjacent Section
Users Should VERIFY all Benchmarks Information before use.



| BM # | ELEV | DESCRIPTIONS |
|------|---------|---|
| 24 | 1021.44 | FIRE HYDRANT (N BOLT) (NW) CORNER OF WOODLAWN UNION PARK, EAST SIDE OF WACKER DRIVE |
| 25 | 1000.12 | FIRE HYDRANT (NORTH BOLT) SOUTH OF NORTH DRIVEWAY OF WOODLAWN PARK EAST SIDE OF WACKER DRIVE |
| 28 | 997.06 | FIRE HYDRANT (NW BOLT) AT THE END OF PROSPECT STREET ON NORTH SIDE WEST OF ELM (SIDE SHOT) |
| 31 | 1021.33 | FIRE HYDRANT (EAST BOLT) (SW) CORNER OF FOREST AND VICTOR DRIVE |
| 32 | 1038.44 | FIRE HYDRANT (SOUTH BOLT) (SE) OF (NE) CORNER OF PROSPECT STREET AND PEACE LUTHERAN DRIVE |
| 34 | 1034.27 | FIRE HYDRANT (NE BOLT) (SE) CORNER OF RUSSEL AVE. AND FOREST |
| 35 | 1037.68 | FIRE HYDRANT (NW BOLT) (NW) CORNER OF CENTER STREET AND RUSSEL AVE. SIDE SHOT |
| 37 | 1037.40 | FIRE HYDRANT (SW BOLT) (NW) CORNER OF CENTER AND ROSSMAN STREET |
| 51 | 1016.13 | UTILITY POLE ON THE WEST SIDE OF MAIN ST. AT HOUSE# 837, R/R SPIKE ON EAST SIDE OF POLE, 1' ABOVE GROUND. |
| 56 | 1017.93 | R/R SPIKE IN S/S UTILITY POLE #1557 (1' ABOVE GROUND) AT EAST LOT LINE TO HOUSE #36 W. PROSPECT, N/S OF W. PROSPECT |
| 91 | 1020.00 | FIRE HYDRANT, NE BOLT WITH TAG, SE CORNER OF SETTLEMENT ROAD AND ST. KILIAN PARKWAY [1018.06 NW BOLT BY OTHERS] |
| 92 | 1024.83 | FIRE HYDRANT, SE BOLT WITH TAG, SE CORNER OF SETTLEMENT ROAD AND CENTER STREET [1023.87 BY OTHERS] |
| 93 | 1020.58 | FIRE HYDRANT, SE BOLT WITH TAG [1019.61 BY OTHERS] SW CORNER OF SETTLEMENT ROAD AND MAYFIELD ROAD |
| 94 | 1017.93 | FIRE HYDRANT, SE BOLT WITH TAG [1016.36 BY OTHERS] SE CORNER OF SETTLEMENT ROAD AND ROCKFIELD ROAD |
| 95 | 1019.00 | FIRE HYDRANT, NE BOLT WITH TAG, EAST SIDE OF SETTLEMENT ROAD, 300'+ - SW OF BM 94 |
| 96 | 1009.17 | FIRE HYDRANT, SE BOLT WITH TAG, SE CORNER OF ELM STREET AND ST. KILIAN PARKWAY, ON ST. KILIAN PARKWAY, (2' EXTENSION AND LOCATION FLAG ADDED - OLD ELEVATION WAS 1007.15) |
| 97 | 995.73 | FIRE HYDRANT, WEST BOLT WITH TAG, ON ABBOTT AVE. 300'± WEST OF ELM STREET, NEAR EAST PROP LINE TO WOODLAWN PARK |
| 98 | 989.57 | FIRE HYDRANT, NE BOLT AT ARROWHEAD ON FLANGE, NORTH SIDE OF ABBOTT AVE., NE OF V.F.W. BUILDING, 100' ±, EAST OF WOODLAWN PARK PARKING LOT [989.80 NW BOLT BY OTHERS] |
| 100 | 1033.40 | FIRE HYDRANT, NE BOLT WITH TAG, E/S ST. KILIAN PARKWAY @ N LOT LINE OF HOUSE #1146 |
| 101 | 1029.87 | FIRE HYDRANT, SW BOLT AT ARROWHEAD, NE CORNER OF ST. KILIAN PARKWAY AND CENTER STREET |
| 102 | 1027.25 | FIRE HYDRANT, NW BOLT, E/S CENTER STREET @ SW LOT CORNER OF HOUSE #1118 ST. KILIAN PARKWAY |
| 103 | 1023.17 | FIRE HYDRANT, NW BOLT AT ARROWHEAD, NE CORNER OF MAYFIELD ROAD AND ST. KILIAN PARKWAY, @ HOUSE #232 ST. KILIAN |
| 104 | 1024.01 | FIRE HYDRANT, NE BOLT AT ARROWHEAD, S/S OF ST. KILIAN PARKWAY @ ROCKFIELD ROAD EXTENDED SOUTH |
| 106 | 1012.11 | FIRE HYDRANT, SW BOLT AT ARROWHEAD, E/S ELM STREET @ DEAD END NORTH, @ NORTH LOT LINE OF HSE #1220 |
| 108 | 1029.37 | FIRE HYDRANT, BOLT AT ARROWHEAD, SE CORNER OF W. PROSPECT & CENTER STREET |
| 110 | 1038.53 | FIRE HYDRANT, SE BOLT AT ARROWHEAD, N/S W. PROSPECT BETWEEN HSE #222 & HSE #240 |
| 117 | 991.05 | FIRE HYDRANT, WEST SIDE SPRUCE STREET AT ABBOTT, SW BOLT W/TAG |
| 118 | 977.00 | FIRE HYDRANT, NW BOLT W/TAG, NORTH SIDE OF STATE STREET, 50' WEST OF AND ACROSS FROM BLACKS(#629) |
| 128 | 1009.21 | FIRE HYDRANT, SW BOLT W/TAG, W/S ELM STREET @ HSE #851 |
| 129 | 1004.91 | FIRE HYDRANT, SW BOLT W/TAG, W/S ELM STREET @ HSE #817 |
| 130 | 1001.51 | FIRE HYDRANT, SW BOLT W/TAG, W/S ELM STREET @ HSE #709 |
| 165 | 992.11 | FIRE HYDRANT, TOP NUT, SW COR. ABBOTT AVE. & SPRUCE ST., SEE BM117 991.05 SW BOLT W/ TAG |
| 166 | 998.82 | FH, TOP NUT, W/S SPRUCE STREET, @ SPRUCE ST. & VIOLET AVE. |
| 167 | 987.61 | FIRE HYDRANT, TOP NUT, NW COR. SPRUCE ST. & W. PROSPECT ST. |
| 173 | 1030.73 | FIRE HYDRANT, NE BOLT W/TAG, EAST SIDE OF CENTER ST., 200' ± - N. OF W. PROSPECT |
| 174 | 1028.90 | FIRE HYDRANT, NE BOLT W/TAG, SE CORNER OF CENTER ST. AND PEACE LUTHERAN PARKWAY ON CENTER ST. |

Date Plotted: January 2021
 R:\Projects\Survey\bm_book_current\SE17.dwg