

### MISSION:

The mission of the Engineering Department is to provide the City of Hartford with engineering, design, staking, and inspection, and to review plans for all City public improvements including streets, sanitary sewer, water main, storm sewer, and parks. Most water main, sanitary sewer, storm sewer, and street construction projects are designed and managed through the Engineering office. Overall authority in the reviewing and inspection of construction is conducted through this office. Engineering also assists other departments in designing parks and facilities. Using a computer-aided design system the Engineering division maintains all City maps and creates long-range development plans in conjunction with other departments. The division is responsible for the allocation of special assessments to property owners, and maintains functional authority over most capital improvement program projects.

- Design sanitary sewer, water main, and storm sewer on streets within City reconstruction projects.
- Maintain review timetable for developers' utilities and street plans for subdivisions in the City.
- Assist development of GIS system.
- Monitor effectiveness of utility construction standards and procedures.
- Provide orderly utility expansion in subdivisions.
- Study operational plan for new state storm water regulations.
- Develop strategy for detention pond maintenance.
- Work with DOT on future DOT projects within the City.
- Coordinate the sidewalk repair program.
- Provide field locates for sanitary and storm sewers for Digger's Hotline requests.

GENERAL GOVERNMENT ~ Engineering

---

---

2019 Department Detail Information

ENGINEERING ~ Revenue

	2016 Actual	2017 Actual	2018 Budget	2019 Estimate
435600.43581 State Grants	\$ -	\$ -	\$ -	\$ -
461400.46141 Engineering Fees	\$ -	\$ 1,568	\$ 500	\$ 500
461400.46142 Certified Survey Maps	\$ 1,776	\$ 1	\$ 1,000	\$ 500
461400.46143 Engineering Supplies	\$ 113	\$ 61	\$ 100	\$ 100
461400.46144 Sidewalk Permit Fees	\$ 1,200	\$ 890	\$ 1,000	\$ 700
461500.46150 Plans And Specs Fees	\$ 1,020	\$ 565	\$ 500	\$ 500
<b>Total Building Inspection</b>	<b>\$ 4,109</b>	<b>\$ 3,085</b>	<b>\$ 3,100</b>	<b>\$ 2,300</b>

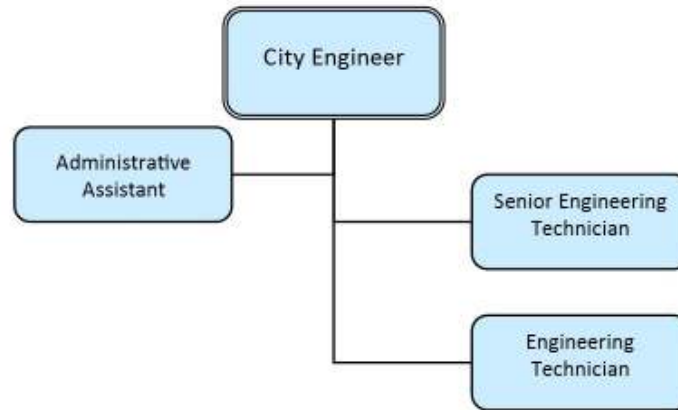
**GENERAL GOVERNMENT - Engineering  
2019 Department Detail Information**

**ENGINEERING ~ Summary**

	<b>2017 Actual</b>	<b>2018 Budget</b>	<b>2019</b>	<b>Gen. Fund</b>
<b>Labor</b>	\$ 88,910	\$ 90,800	\$ 91,906	91,906
<b>Operations And Maintenance</b>	\$ 31,161	\$ 26,500	\$ 27,865	27,865
<b>Capital</b>	\$ 7,000	\$ -	\$ 42,000	42,000
<b>Street Labor</b>	\$ 49,466	\$ 65,894	\$ 69,249	69,249
<b>Operations And Maintenance</b>	\$ 7,500	\$ 7,000	\$ 7,000	7,000
<b>Park Labor</b>	\$ 14,418	\$ 13,475	\$ 13,665	13,665
<b>Operations And Maintenance</b>	\$ 1,000	\$ 1,000	\$ 1,000	1,000
<b>Grand Total</b>	<b>\$ 199,455</b>	<b>\$ 204,669</b>	<b>\$ 252,685</b>	<b>\$ 252,685</b>
<b>Total Sal/FB</b>	\$ 152,794	\$ 170,169	\$ 174,820	\$ 174,820
<b>Total Other Exp</b>	\$ 46,661	\$ 34,500	\$ 77,865	\$ 77,865
<b>Grand Total</b>	<b>\$ 199,455</b>	<b>\$ 204,669</b>	<b>\$ 252,685</b>	<b>\$ 252,685</b>

## GENERAL GOVERNMENT ~ Storm Water Management

---



### MISSION:

The primary mission of Storm Water Management is to isolate funding associated with the management of storm water, monitor conformance with DNR regulations, and allocate costs of detention pond and storm sewer outfall maintenance.

- Continue to develop plans to maintain compliance with the DNR storm water permit.
- Allocate private detention pond costs to subdivisions.
- Continue to isolate storm water management costs in this division for cost analyses.
- Review the City's storm water management plan and adjust as necessary to comply with DNR standards.

**GENERAL GOVERNMENT ~ Storm Water Management**

---

**2019 Department Detail Information**

**STORMWATER MANAGEMENT ~ Revenue**

	<b>2016 Actual</b>	<b>2017 Actual</b>	<b>2018 Budget</b>	<b>2019</b>
422100.42200 Special Assessment Revenue	\$ -	\$ -	\$ -	\$ -
<b>TOTAL</b>	\$ -	\$ -	\$ -	\$ -

## 2019 Department Detail Information

## STORMWATER MANAGEMENT ~ Summary

	2017 Actual	2018 Budget	2019	Gen. Fund	Water	Sewer
Labor	\$ 19,236	\$ 22,547	\$ 26,081	\$ 26,081	-	-
Operations And Maintenance	\$ 19,000	\$ 19,000	\$ 19,000	\$ 19,000	-	-
Public Education and Outreach - Labor	\$ 3,352	\$ 4,164	\$ 4,214	\$ 4,214	-	-
Operations And Maintenance	\$ 300	\$ 100	\$ 700	\$ 700	-	-
Public Involvement - Labor	\$ 3,563	\$ 4,203	\$ 4,214	\$ 4,214	-	-
Operations And Maintenance	\$ 300	\$ 100	\$ 500	\$ 500	-	-
Illicit Discharge Detection - Labor	\$ 4,822	\$ 5,693	\$ 4,807	\$ 4,807	-	-
Operations And Maintenance	\$ 200	\$ 100	\$ 200	\$ 200	-	-
Site Pollutant Control - Labor	\$ 3,406	\$ 3,978	\$ 4,208	\$ 4,208	-	-
Operations And Maintenance	\$ 100	\$ 100	\$ 100	\$ 100		
Post Construction Management - Labor	\$ 3,877	\$ 4,486	\$ 5,431	\$ 5,431	-	-
Operations And Maintenance	\$ 400	\$ 1,700	\$ 1,700	\$ 1,700		
Pollution Prevention - Labor	\$ 22,093	\$ 23,174	\$ 21,501	\$ 21,501		
Operations And Maintenance	\$ 2,500	\$ 2,500	\$ 2,500	\$ 2,500		
Quality Management - Labor	\$ 18,633	\$ 13,730	\$ 13,545	\$ 13,545		
Operations And Maintenance	\$ 400	\$ 100	\$ 100	\$ 100		
Storm Water System Map - Labor	\$ 7,656	\$ 14,571	\$ 13,654	\$ 13,654		
Operations And Maintenance	\$ 400	\$ 100	\$ 100	\$ 100		
<b>Grand Total</b>	<b>\$ 110,238</b>	<b>\$ 120,346</b>	<b>\$ 122,555</b>	<b>\$ 122,555</b>	<b>-</b>	<b>-</b>
Total Sal/FB	\$ 86,638	\$ 96,546	\$ 97,655	\$ 97,655	-	-
Total Other Exp	\$ 23,600	\$ 23,800	\$ 24,900	\$ 24,900	-	-
<b>Grand Total</b>	<b>\$ 110,238</b>	<b>\$ 120,346</b>	<b>\$ 122,555</b>	<b>\$ 122,555</b>	<b>-</b>	<b>-</b>